

## Classic 40 and Classic 60

**MovinCool's most powerful self-contained air conditioner to keep productivity at optimum levels in the face of extraordinary heat.**

The MovinCool Classic 40 and 60 are reliable workhorses for controlling the most heat-intensive environments in manufacturing, warehousing, and outdoors.

### Key Features

- Units from 39,000 to 60,000 Btu/h — for efficient sizing to your application.
- Flexible duct extends up to 80 ft. — versatile, targeted cooling in hard-to-reach spaces.
- Rugged design and construction — for superior performance in harsh environments.
- Programmable digital temperature controls — for weekend and weekday operations with optional wall thermostat and remote control box.
- Can be equipped for mobility with optional casters.
- Safety listed for outdoor use.
- Handles temperatures up to 115°F operation.

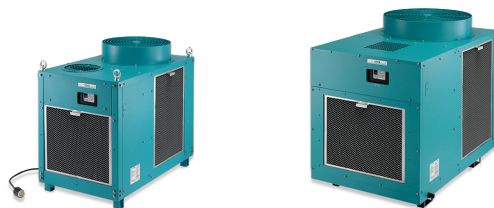


### Ideal for . . .

Warehouses  
Assembly Lines  
Manufacturing Plants  
Process Cooling  
Moisture Removal  
Outdoors and Events

*Another line of quality products by DENSO.*

**DENSO**



## Classic Series Specifications

		Classic 40	Classic 60
Electronic Features	Control Panel	Digital	Digital
	Thermostat Control	Electronic	Electronic
Cooling Capacity	Rating Conditions: 95°F @ 60% RH	39,000 Btu/h	60,000 Btu/h
Electrical Characteristics	Voltage Requirement	3 Phase, 220 V	3 Phase, 460 V
	Total Power Consumption	4.2 kW	5.9 kW
	Current Consumption	14 amps	8.8 amps
	Recommended Fuse Size	25 amps	20 amps
	NEMA Plug Configuration	L15-30	N/A
	Min. – Max. Voltage	198 – 240 V	440 – 480 V
Fans	Motor Output	0.75 kW Evaporator 0.40 kW Condenser	0.75 kW Evaporator 0.40 kW Condenser
Evaporator	Fan Type	Centrifugal	Centrifugal
	Max. Air Flow	1060 CFM	1580 CFM
	Max. External Static Pressure	1.73 IWG	1.35 IWG
Condenser	Fan Type	Propeller	Propeller
	Max. Air Flow	2650 CFM	3800 CFM
	Max. External Static Pressure	0.05 IWG	0.05 IWG
Compressor	Type	Hermetic Scroll	Hermetic Scroll
	Output	2.3 kW	3.89 kW
Refrigerant	Type / Pre-charged Amount	R-410A / 3.9 lb	R-410A / 5.5 lb
Dimensions	W x D x H	26 x 44 x 38 in	32 x 49 x 42 in
Net Weight/Shipping Weight		344/396 lb	474/566 lb
Power Cord	Gauge	12 AWG (4-core)	N/A
	Length	6 ft	N/A
Condensate Tank Capacity		2 @ 5 gal (Optional)	N/A
Operating Conditions	Min. – Max. @ 50% RH	75° – 115°F	75° – 115°F
Max. Duct Length	Per Cold Duct Hose	Varies	Varies
	Hot Duct Hose	40 ft	40 ft
Max. Sound Level	With Condenser Duct - High/Mid/Low	N/A	N/A
	Without Condenser Duct - High/Mid/Low	72 dB(A)	72 dB(A)

All specifications subject to change without notice. All models come with a standard warranty covering the entire unit and compressor for 12 months. Visit [MovinCool.com/warranty](http://MovinCool.com/warranty) for details on MovinCool's industry-best free Extended Warranty Program which includes three (3) years for both parts and labor on portable units.

**Purchase MovinCool products whenever you buy Trane® Parts & Supplies**

DENSO Products and Services Americas, Inc.  
3900 Via Oro Avenue | Long Beach CA 90810 USA  
800-264-9573 | [MovinCool.com](http://MovinCool.com)

